

### CONTACT ARRANGEMENT

code for x	function	connected terminals
D	ON - ON	1-2, 4-5, 7-8 alternating with 2-3, 5-6, 8-9
F	ON - MOM	rest position: 1-2, 4-5, 7-8; pushed down: 2-3, 5-6, 8-9

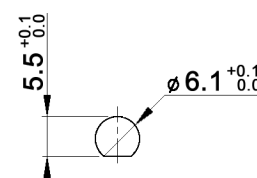
### RATING

y	contacts	all other conductive parts	rating DC	rating AC
empty	Ag (solid)	Brass, 10 µm Ag over 1.5 µm Ni	6V / 6 A 12V / 5 A 30 V / 4 A	125 V / 6 A 250 V / 3 A
B	Brass, 2 µm Au over 3 µm Ni	Brass, 2 µm Au over 3 µm Ni	max. 0.4 VA, max. 20 V AC/DC	
G	Ag (solid), 2 µm Au over 3 µm Ni	Brass, 2 µm Au over 3 µm Ni	6V / 6 A 12V / 5 A 30 V / 4 A 150 V / 10 mA	125 V / 6 A 250 V / 3 A

### Specifications:

Contact resistance: 20mOhm max.  
 Insulation resistance: 1 000MOhm min. at 500V DC  
 Dielectric strength: 1 500V, 50Hz for the duration of 1 minute  
 Operating temperature: -45°C to +140°C  
 Mechanical life: min. 30 000 cycles  
 Soldering conditions: hand-soldering: max.: 420°C, 3sec., 60W  
 auto-soldering: max.: 270°C, 5sec.  
 Mounting instruction: max. torque: 49Ncm  
 IP rating: IP67  
 Material: Case: DAP  
 Housing: steel, nickel plated  
 Bushing: copper alloy, C3604BD nickel plated  
 Actuator: copper alloy, C3604BD chrome plated  
 Included accessories: 1 pc. nut M6x0.75, nickel plated, 9mm wrench size  
 1 pc. tooth washer  
 1 pc. O-ring, silicone

### PANEL MOUNTING



### Compliance: RohS III (2015/863/EU)

Tolerances: 0.00: ±0.25mm 0.0: ±0.40mm	Date 07/09	Name dr	<h1>MPE 306 xy</h1>
Revised	01/22	dr	<h1>30 18 81</h1>
Contact arrangement	07/15	dr	
Dimension	01/11	dr	Page 1/1
Modifications	Date	Name	